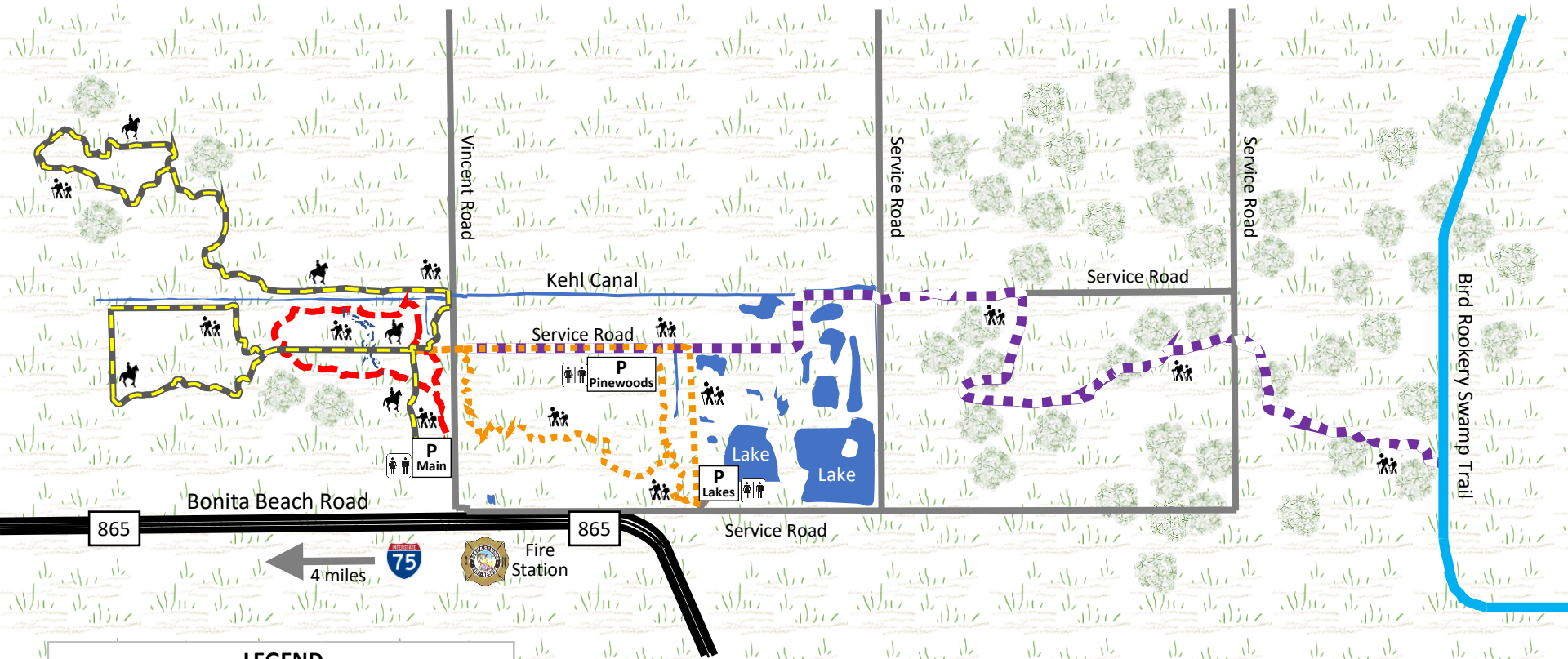


CREW FLINT PEN STRAND TRAILS

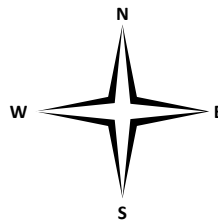


LEGEND

Round trip distances from Main parking lot

Red Trail – 1.5 miles (Billy G. Cobb Memorial Trail)	
Blue Trail – 0.25 miles	
Yellow Trail South – 3 miles	
Yellow Trail North – 2.9 miles	
Orange Trail – 2.9 miles	
Purple Trail – 6.2 miles	
Parking Lot	

Map is not to Scale



IN AN EMERGENCY CALL 911

Main Parking Lot location is
15970 Bonita Beach Road
Bonita Springs FL 34135

Remain on marked trails and do not enter adjacent areas marked as private property.



Welcome to CREW FLINT PEN STRAND

Flint Pen Strand (FPS)

- ❗ Part of the 60,000-acre Corkscrew Regional Ecosystem Watershed Project, FPS is a 14,000-acre preserve offering hiking, biking, nature study, photography, bird watching, trail running and more.
- ❗ Wetlands filter and store water to recharge our aquifer.
- ❗ The Kehl Canal is the headwaters of the Imperial River.
- ❗ Enjoy all the wildlife and plants you may see along the trail.
- ❗ Multiple trails cross several ecosystems, including pine flatwoods, oak hammocks, wet prairies and cypress forests.
- ❗ Trails are seasonally wet.
- ❗ Colored trail markers are on posts and on trees.



Please note:

- ❗ No motorized vehicles.
- ❗ Picking plants or berries is prohibited.
- ❗ Dogs need to be on a 6-foot leash.
- ❗ For hunting permit information, see the FWC kiosk in the main parking lot.
- ❗ For special use licenses for Horseback riding see SFWMD.gov.

The CREW Land & Water Trust

The CREW Land & Water Trust was established in 1989 as a nonprofit organization to help coordinate the land acquisition, land management and public use of the 60,000-acre CREW Project. The CREW Trust has helped to support the purchase of approximately 55,000 acres. For more information go to CREWtrust.org.



What is the CREW Project?

- ❗ 60,000-acre watershed preserved to collect, store and clean water for you and generations to come.
- ❗ Protected land providing habitats for wildlife.
- ❗ Four trail systems for recreational opportunities such as hiking, bird watching, nature photography and more.

What is a watershed?

- ❗ An area of land that collects and stores water and transports it to a larger body of water.
- ❗ Allows rainwater to spread across the wetlands and soak into the ground, recharging your drinking water.
- ❗ Plants and soil filter and clean the water.
- ❗ Provides natural flood protection.